



Match Striker Gallery



Wiltshaw & Robinson (Carlton Ware) (Page 1)

[Homepage](#)

Manufactures

(click to view match strikers and company history)

[Charles Allerton & Sons](#)

[Arkinstall & Sons Ltd](#)
(Arcadian China)

[W.T. Copeland & Sons Ltd](#)
(Spode)

[Doulton & Co Ltd](#)

[Dudson](#)

[Fieldings & Co](#)

[F. & W. Goebel Co](#)

[Gouda](#)

[Lovatt & Lovatt](#)

[James MacIntyre & Co](#)

[Mintons](#)

[Olivant Potteries Ltd](#)

[F. & R. Pratt & Co \(Ltd\)](#)

[A.G. Richardson & Co Ltd](#)
(Crown Ducal)

[Salopian Art Pottery Co](#)

[Shelley Potteries Ltd](#)

[Taylor, Tunnicliff & Co](#)

[Unknown Makers](#)

[Watcombe](#)

Company History

Wiltshaw & Robinson was formed as a partnership between J.F. Wiltshaw and two brothers, W.H. Robinson and J.A. Robinson in 1890. Pottery production then began in the Carlton Works in Stoke-on-Trent, Staffordshire.

In 1894 they added the trade name Carlton Ware to their products.

Traded as Wiltshaw, Robinson & Son before becoming a limited company (Wiltshaw and Robinson Ltd.) in November 1911.

The firm then became Carlton Ware Ltd. in 1958 before being taken over by Arthur Wood and Sons in 1967 and finally going into liquidation in 1989.

Attempts were made to continue production by Grosvenor Ceramic hardware but these ended in 1992.

Subsequently, in 1997, Frank Salmon of Francis Joseph Publishing acquired the Carlton Ware name and limited numbers of pieces bearing the Carlton Ware name are now available again.

Marks

Some examples of marks seen on Wiltshaw & Robinson match strikers are shown below.



Plain Match Strikers

Wiltshaw & Robinson made their rough bodied ball style match striker in a wide range of colours, some of which are shown below. These are easy to clean as the rough surface does not contain the pits (which trap dirt from the burnt matches) found in some other companies products, which would have been a selling point. There are, however, some examples with a cruder, pitted design to be found (such as the last image below). I suspect these may be an earlier design (but they could just be an occasional variation). They also made examples in other shapes such as the dome shown in the penultimate image.

[Wedgwood](#)

[Wiltshaw & Robinson
\(Carlton Ware\) \(1\)](#)

[Wiltshaw & Robinson
\(Carlton Ware\) \(2\)](#)

[W. Wood & Co](#)



[Unmarked Match
Strikers \(1\)](#)

[Unmarked Match
Strikers \(2\)](#)

[Unmarked Match
Strikers \(3\)](#)

[Unmarked Match
Strikers \(4\)](#)

[Unmarked Match
Strikers \(5\)](#)

[Unmarked Match
Strikers \(6\)](#)



[Metal Match Strikers \(1\)](#)

[Metal Match Strikers \(2\)](#)



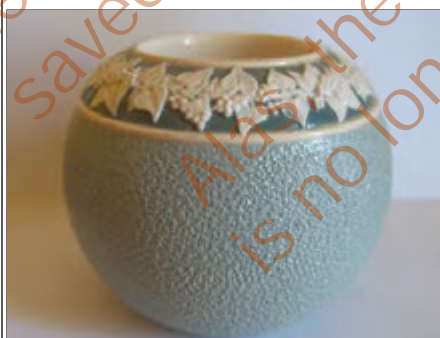
[Retailers Marks](#)

[Advertising Match
Strikers](#)

Match Strikers with Vine Lead Decoration

The following match strikers all have a similar vine leaf decoration, registered design numbers on the domed example dates them to 1898 (R^D N^O. 313737). I have also seen a tobacco jar/match striker in this pattern (similar in shape to the first example in the section below).

[Suggested Reading &
Links](#)





Tobacco Jars & Match Strikers

Some of the Tobacco Jars made by Wiltshaw & Robinson also incorporated match strikers, either as removable parts (shown in the first image, here the match striker can be lifted off to reveal a ceramic inner lid) or on the side of the jar (shown in the second image). (R^D N^o. 330913)



Match strikers with ash trays

These match strikers incorporate an ash trays. The first example has the atypical pitted surface mentioned in the section on plain match strikers above while the second has the more typical rough surface.



Curling Stone Match Striker

I believe match striker is intended to look like a curling stone. It has a textured striking band around the center, with gilt edges and is a very nice piece.



[Contact Me](#) made with NVU

Copied from
The Match Striker Gallery Website.
These Wilshaw & Robinson's pages were
saved by Carlton Ware World in 2010.
Alas, the Match Striker Gallery site
is no longer available (March 2017)



Match Striker Gallery



Wiltshaw & Robinson (Carlton Ware) (Page 2)

[Homepage](#)

Manufactures

(click to view match strikers and company history)

[Charles Allerton & Sons](#)

[Arkinstall & Sons Ltd](#)
(Arcadian China)

[W.T. Copeland & Sons Ltd](#)
(Spode)

[Doulton & Co Ltd](#)

[Dudson](#)

[Fieldings & Co](#)

[F. & W. Goebel Co](#)

[Gouda](#)

[Lovatt & Lovatt](#)

[James MacIntyre & Co](#)

[Mintons](#)

[Olivant Potteries Ltd](#)

[F. & R. Pratt & Co \(Ltd\)](#)

[A.G. Richardson & Co Ltd](#)
(Crown Ducal)

[Salopian Art Pottery Co](#)

[Shelley Potteries Ltd](#)

[Taylor, Tunnicliff & Co](#)

[Unknown Makers](#)

[Watcombe](#)

Crested Match Strikers

Wiltshaw & Robinson produced a wide range of crested match strikers with the coats of arms of Universities, Colleges, Towns, Cities etc on. The most impressive are those with a raised crest painted or transfer printed with the coat of arms, however others were painted or printed directly onto the body of the striker (with less impressive results if the body was rough). In other crested match strikers the coat of arms was applied directly to the body of the match striker. The crest could be a transfer (which can fade as in the first picture below) or over painted enamel. This worked well if the body was smooth, however it can appear crude if the body was rough as shown below.

Universities



Cambridge Colleges

Crested match strikers were made for many of the Cambridge colleges. These used a 'plain' shield shape and are typically found in light blue or brown.



[Wedgwood](#)

[Wiltshaw & Robinson
\(Carlton Ware\) \(1\)](#)

[Wiltshaw & Robinson
\(Carlton Ware\) \(2\)](#)

[W. Wood & Co](#)



[Unmarked Match
Strikers \(1\)](#)

[Unmarked Match
Strikers \(2\)](#)

[Unmarked Match
Strikers \(3\)](#)

[Unmarked Match
Strikers \(4\)](#)

[Unmarked Match
Strikers \(5\)](#)

[Unmarked Match
Strikers \(6\)](#)



[Metal Match Strikers \(1\)](#)

[Metal Match Strikers \(2\)](#)

[Retailers Marks](#)

[Advertising Match
Strikers](#)

[Suggested Reading &
Links](#)



The Match Striker Gallery Website
These Wiltshaw & Robinson page were
saved by the Match Striker Gallery site
as they no longer exist in 2010.
(March 2017)



Oxford Colleges

Crested match strikers were also made for Oxford colleges. All of the examples I have seen use a more complicated shield shape than the Cambridge college ones. Typically they are found in dark blue or brown.



London Colleges

This Imperial College, London match striker is in near mint condition, and has gilding around the match well. This is very easily removed though use, and it is not clear whether this was present on all the crested match strikers, or only some of them.



Independent Schools

In order to make a match striker with a school coat of arms there would have to be a number of people interested in buying them (and who could afford them). Independent schools would fit the profile quite well, with teachers, students and their families as potential purchasers.



Towns and Cities

The last image below is of a transfer printed coat of arms of the City of Birmingham. It shows how badly such decoration can fade.



Unknown Coats of Arms

I am uncertain what the coats of arms on the two match strikers shown below represent. The first shows crossed golf clubs, four golf balls and the motto 'Far And True' which is associated with a number of golf clubs and tournaments.



Crested Match Striker Construction

From examination of damaged examples it is possible to get an idea of how these were made. First a match striker body would have been made and coloured. The raised shield would have been made separately and then stuck on. Next the shield would have been coloured yellow (this can be seen around the edge of all the shields) and finally the coat of arms would have been painted or transfer printed and the body of the striker finished off. The image below shows an example (probably of an Oxford college) where the shield has broken off.



[Contact Me](#) made with NVU

The Match Striker Gallery
These Wiltshaw & Robinson pages were saved by Carlton Ware World in 2010
Alas, the Match Striker Gallery site is no longer available (March 2017)