

**CARLTON WARE NEWSLETTER No. 64**

from

**Ian Harwood & Jerome Wilson**

December 2013

We received lots of comments from our readers regarding all the birds and animals we featured in our last Newsletter from the **GLACIELLE WARE** range and, when we have accumulated enough additional pictures, we will bring you an update on other models that have since come to light. In the mean time, we are continuing along on the animal theme with a very unusual large bowl that was sold recently in Yorkshire.



The **ANIMAL** pattern is very seldom seen and comes in three variations; a **Fox**, a **Squirrel** and a **Deer**. There is only one pattern number for all of the animals, **4019**, and they usually appear as only one animal on each piece. So when a large 14 inch bowl came up for sale featuring both the **Fox** and the **Squirrel**, we knew it was a pretty rare piece.

**ANIMAL** pattern pieces always fetch a good price and this piece was no exception, selling for £1,100 plus commissions.

Below are a 5 inch vase with the **Squirrel** and a 13 inch charger with the **Fox**. We were unable to find a picture of the **Deer**; if any reader has a piece, please send us a picture.





On the left is a large 10 inch vase in the **CHINESE BIRD & Tree** pattern, number **4117**. This is not a shape that is seen very often, which is a pity, as its large surface area is perfect for some of the more complex Carlton Ware patterns. This piece was listed on the New Zealand TradeMe site earlier this year and sold for NZ\$255 (£130).

Below are 3 more examples of this unusual 10 inch vase:

- 3860 NEW MIKADO** on Powder Blue
- 4017 SECRETARY BIRD** on gloss orange
- 4220 Icelandic Poppy** on gloss pale green



Another unusual shape seen for sale in Scotland recently was a pair of bookends in the **MODERN CROCUS** pattern, number **3803**. Carlton Ware made several different shapes of bookends and this is a particularly stylish art deco pair. We have two other patterns in this shape, **HERBACEOUS BORDER**, pattern number **3801** and **GARDEN GATE**, pattern number **3863**.





Carlton Ware also produced this shape of bookend in plain colours.



Here are two very striking examples; one in black and mottled green and the other in black & mottled brown. Both show the pattern number as **3537**.

We do not have a shape number for the bookends but we have sometimes seen them referred to as FAN. However, FAN is also the name used for another bookend shape.



FAN shape bookends, pattern number **3532**, **3533** & **3586**



FAN shape bookends in the **MEDLEY** pattern number **3587** & **3593**



Above are two 9" plates, shape **1601**, in the **Babylon** pattern, number **4125**. The plate on the left came up for auction recently in the U.K. and, when we added the picture to our files, we noticed that we already had a picture of this pattern on this shape. At first, we thought it was the same plate but then we started to notice the differences in each piece. Firstly, the background, that actually forms the colourway of Gloss Green & Yellow, is quite different. Then, when the pattern itself was applied to the plate, there were slight variations in placement. Finally, although the colour palette used for the enameling is similar, the areas where the colours have been applied are different. The differences are due to the choices made by each individual paintress. As long as she used the palette specified for each pattern and colourway, she was free to apply them as she pleased.

It certainly shows why it is sometimes hard to part with duplicates – each piece has its own individual attraction. However, collecting individual pieces of each pattern and colourway is difficult and expensive enough, without doubling up!

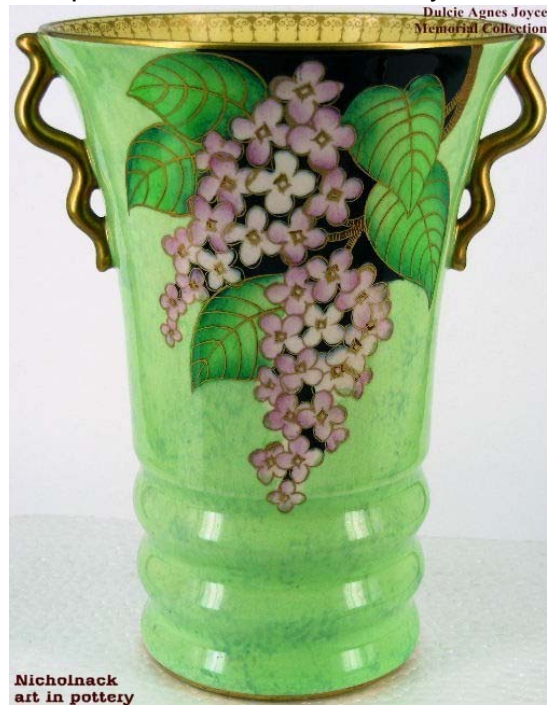
Below are two **REVO** trays in **Jigsaw**, a pattern we featured recently. Identical in size, they are quite different in the application of the pattern. The **Handcraft** range gave the paintresses even more freedom of choice.





December and was unsold by the end of the month. Unfortunately, the picture of the base showed no pattern number. This is a very cheerful pattern, featuring one of summer's early blooms. Here in Calgary, it will be another 6 months before we see the real thing!

Here's an interesting colourway that we have not previously seen; a sponged pink vase, shape **1692**, in the **LILAC** pattern. This is not an easy pattern to find, even in the more common gloss green colourway, pattern number **4279**. This piece was listed on eBay in late



While we wait for spring to arrive, we will carry on collecting (sounds like a movie title) and we wish you all a very successful 2014 and hope you find that long sought for piece!

Ian Harwood & Jerome Wilson  
 Calgary, Canada  
[jeromian@shaw.ca](mailto:jeromian@shaw.ca)