

## CARLTON WARE NEWSLETTER #43

From  
Ian Harwood & Jerome Wilson

October 2008



In last month's Newsletter we reviewed Carlton Ware vase shapes and, for some reason, it resulted in more response from the readers than any of our previous Newsletters. So this month we are carrying on with this theme and featuring the various jug shapes and numbers that we have been able to identify. And what better way to start than with this lovely shape that was seen for sale on eBay this past month. The seller did not include the shape number in his listing so we wrote to **Harvey Pettit** of **Carlton Ware World** and asked him if he could identify it for us.



Harvey replied, "The shape number on the angular jug is **493**. Curiously, I do not have a factory representation of it, but only have it listed by taking the number directly from an example. This suggests that the shape was only in production for a short time - this is backed up by its apparent rarity. It remains one of my favourite shapes." Ours too! And it is especially lovely when such a wonderful deco pattern as **FLOWER & FALLING LEAF** in **RUBY LUSTRE** number **3949** is displayed on it.



Equally as beautiful and rare is jug shape **494**, which is very similar in style. The only example of this shape that we have seen was on eBay back in 2003 when this beautiful jug in the **Humming-bird** pattern number **3462** was seen for sale.



Once again, a wonderful deco pattern has been used to maximum effect on both sides of the jug. If one were lucky enough to own either of these beauties, it would be hard to choose which side to display!



Earlier this year, we received a picture from **Barry & Elaine Girling** of a new addition to their collection. They usually have a policy of only collecting one example of each pattern but were unable to resist adding this beautiful **WAGON WHEELS** jug to their collection, even though they already had an example of the pattern in another colourway. This pattern is hard to find in any colourway but it is rarely found in this unusual gloss pale green ground number **3812** and an equally unusual jug shape number **495**.



We wrote back to **Barry & Elaine** complimenting them on such a wonderful find and commented that it is interesting to see that there are differences in the execution of the various colourways of this pattern. Neither the **RUBY LUSTRE** nor the gloss pink colourway includes the “wavy” effect used on the green ground. We compared it to a similar effect on the matt blue ground of the **Geometrica** pattern, all be it that the “waves” go in the reverse direction.



We also commented that there had recently been a similar shape jug for sale on eBay and in another of the popular art deco Best Ware patterns, **BELL** on the matt green ground number **3855**. We had initially paid attention to this jug when it was first listed and then we forgot about it as an outstanding **RUBY LUSTRE** example appeared at the same time on another auction site. However, in the end it went way beyond what we were prepared to pay for it.



We then checked with the jug on eBay but saw that it had already sold. The seller had kept the ID of the buyer private, so we had no idea who had won it. About a week later, our friends down the road, **Mario & Betty**, turned up with their latest acquisition – the matt green **BELL** jug – and it’s a beauty!



Shape 786



Shape 789



Shape 790



Shape 1347 - MODERN



Shape 1676



Shape 1677



Shape 2150

**A COLLECTION OF JUGS - SHAPE 496**



**3788 BELL**



**2794 BIRDS ON BOUGH**



**3525 CLEMATIS**



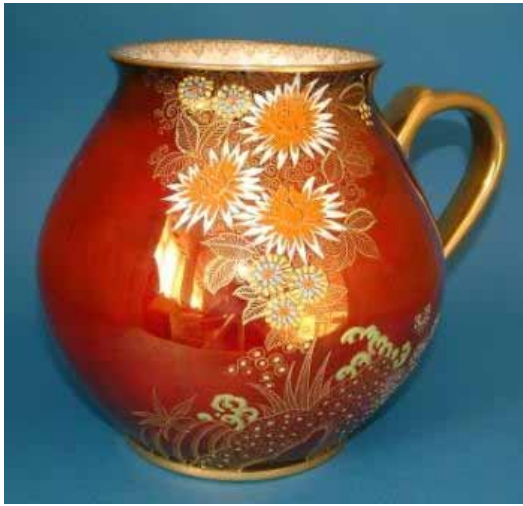
**3673 DAISY**



**3765 DEVIL**



**3355 Feathertailed Bird & Flower**



**4212 Fighting Cocks Glade**



**3358 Gentian**



**3566 Geometrica**



**3589 Hiawatha**



**3973 HOLLYHOCKS**



**4221 Iceland Poppy**



**3719 Mandarin Tree**



**3654 Mandarins Chatting**



**3420 Metropolis**



**3448 Peach Melba**



**3745 PRIMULA**



**3865 Spring**



Back in August, we received an email from **Jimmy Stone**: "I enjoyed your Newsletter #16 (February 2004). I'm trying to find out more information about a Carlton Ware set that I inherited from my great aunt Lizzie. The set is basically a match of the Gondola Bowl with Flower Frog but also has 2 matching vases making a 4-piece set. After doing some research, it looks like the set was produced around 1925. Any other information that you might have would be appreciated." At the time, **Jimmy** did not supply any pictures of his set so we asked

him if it would be possible to forward something, especially to get a better idea of the vases in question. Sometime in September, **Jimmy** sent along these pictures of the individual pieces in his set and we wrote back to him that: "It is



a lovely set and from the pictures it is easy to identify it as pattern number 3130, the **TEMPLE** pattern, which was produced in many different colourways. The vases are commonly referred to as Trumpet Vases, due to their shape. This colourway was probably first introduced during the period of 1929 to 1933 - the first two numbers of a pattern are usually an



indication of the year of issue, give or take a couple of years either way. Patterns remained in production for many years, so the exact date of this set is hard to pin down exactly. However, it is unlikely that they would have been produced any later than 1939, when a ban on the use of colour paints was introduced in England, due to the war effort needing all available resources. It is unlikely that this pattern was reintroduced into production after the war. We would love to see a picture of the set displayed together. Did your Aunt Lizzie give you any idea of when she acquired these pieces?"



This month, **Jimmy** wrote back with this beautiful picture saying: "I think it's interesting that the 2 trumpet vases differ slightly in the painted scenes. As far as the dating goes, I think the general timeframe of 1929-1933 is correct, however my great aunt lost most of her money in the stock market crash of 1929 (but was able to hold onto her furniture and china) so I think closer to 1929 maybe more correct. At any rate, my sisters and I inherited the bulk of our great aunt's belongings and my wife has certainly been a good sport for putting up with me puttering with my antiques! Thanks, **Jimmy & Diane**"





On October 8, 2008, this beautiful and unusual 12½” charger was sold at Hartleys in Ilkley, West Yorkshire. Other than the Carlton Ware “script” backstamp, there was no pattern number on the reverse of the piece, which is unfortunate because, as far as we know, this is a previously unknown pattern. Nevertheless, in our opinion, this is more likely to be a factory painted item than something done outside the factory on a blank. There are too many similarities to other patterns and the enamels are in the usual palette used by the factory. **Harvey Pettit**, chairman of **Carlton Ware World**, tells us that it is not recorded in factory pattern records, so is likely to be a sample of a pattern that did not go in to production. By the way, it sold for £740 (plus commission, we assume).

On October 11, 2008, we were watching a documentary on the CBC (Canadian Broadcasting Corp.) Newsworld channel called “Royal Rivals”. It was a program about the supposed rivalry between Prince William and his father Prince Charles. All of a sudden, we were surprised to see a piece of Carlton Ware sitting on a shelf, right behind one of the “talking heads”!



This was an hour-long program and this shot appeared many times so I had time to get my camera and get a picture of the piece. As you can see, it is a **NEW MIKADO** jar and cover in the **311** shape on a lovely pale yellow ground. It looks like it could be the larger 11” size. Of course, once we saw this piece, we wondered what Judy Wade might have in the cabinet to her right! This is not a new program but this kind of documentary is often repeated, so watch out for it.

During the past couple of months, we have received several pictures from readers of additional vase shapes, for which we are most grateful. Due to the length and many pictures already in this Newsletter, we will include these additional shapes in a future Newsletter, along with additional jug shapes that we may find out about from you.

#### Acknowledgements:

We would like to thank the following people for providing many of the beautiful pictures in this Newsletter. **Barry & Elaine Girling, Mario & Betty Hart, Helen Martin, Jimmy & Diane Stone** and an extra thank you to **Derek & Jane Towns** for providing most of the pictures in the **496** jug shape collection.

Thanks also to **The Cochrane & Pettit Archive of Carlton Ware** for information on jug shape numbers **493** and **2150** and for pattern number and name for **4212 Fighting Cocks Glade**. Thanks must also go to [Carlton Ware World](http://CarltonWareWorld.com) for distributing this Newsletter via their fast server.

Ian Harwood & Jerome Wilson

We can be contacted at:

[jeromian@shaw.ca](mailto:jeromian@shaw.ca)

Tel. 403-243-8172