

## CARLTON WARE NEWSLETTER #41

From

Ian Harwood & Jerome Wilson

### Carlton Ware Lamps In Our Collection



We found our first Carlton Ware lamp at a local auction estate sale here in Calgary back in 1991. If we had just gone by the catalogue listing we would have missed this piece as it was listed as a "ruby glass lamp and shade"! So we were very happy to discover it at the viewing and even more delighted to bring it home after the sale. As you can see, it is a ROUGE ROYALE **VINE** ginger jar lamp with a beautifully made diving dolphin brass base. The ginger jar measures 10" high and is just one piece and was made to be a lamp. As the backstamp could not be seen, it would be unlikely that the auction house would have recognized it as Carlton Ware, unless they knew the pattern or were familiar with ROUGE ROYALE.

The shade was old and tatty and was probably not original. There was nothing special about it to make us want to get it re-covered. Therefore, we have found a suitable new shade and a finial made of ruby glass that you can just see at the top of the smaller picture, so, in some ways the story has come full circle!



Several years later, in 1999, when we were standing at a show here in Calgary, we met a gentleman who recognized some of the Carlton Ware on our table. He said he had a lamp at home and asked if we would be interested in purchasing it. Of course we said that we would. He took our phone number and about a month later he phoned to arrange for us to come over to his house to see the lamp. We were there within the hour! When we asked him how he had obtained the lamp, he said that in the 1950s he worked in a furniture store in Calgary and the lamp was one of the accessories that they sold. He couldn't remember what he had paid for it unfortunately.



The one piece ginger jar, in the **NEW MIKADO** pattern on ROUGE ROYALE, measures 11" high and is again mounted on a diving dolphin brass base. The shade was in good shape and the gentleman said that it was original. This time we even found a diving dolphin finial.





The previous year, in March 1998, we found our first lamp in what we think is referred to as a Candle Lamp. We had bought a piece of Carlton Ware over eBay from Windsor Antiques, some English dealers based in California. After we had received the item and complimented the seller on such a nice piece, good packing, etc., they told us that they had another piece of Carlton Ware and wondered whether we would be interested in it. They said it was a lamp in an Oriental pattern and were happy to sell it to us without putting in on eBay. When we received the picture, we were delighted to see that it was the sought after **CHINALAND (2948)** pattern in ORANGE LUSTRE.

We agreed on a price and a week later it arrived. There was no shade with the lamp so it meant a search for something suitable, which wasn't easy. In the end we found a black shade with a gilt interior. The interior finish does not allow any light to escape through the shade. Consequently, all the light is directed down onto the lamp base. It is the only piece of **CHINALAND** in our collection and looks wonderful when it is lit up. We even found a cloisonné finial to finish off the lamp!



The following year, during a trip to the U.K. in June 1999, we attended a mid-week fair at the Epsom Race Course. There we ran into Linda, a one-time Carlton Ware collector who was now selling off her collection. Luckily for us it included this lovely **TREE & SWALLOW (3279)** lamp in a beautiful pale blue colourway. Once again it came without its shade so, on returning to Calgary, we purchased another of the black and gilt shades. We also bought a lapis lazuli finial which is just perfect!



Our next lamp in this shape came from a live auction on eBay held by Lyon & Turnbull in the U.K. It was the first time we had bid on a live auction on-line, so we were not at all sure how it would work. Obviously we did it right as we ended up with this lovely **MIKADO (2881)** lamp. The only downside of buying from a reputable auction house like this over the internet is that they insist on using professional packing and shipping services which added considerably to the buying price. Yet again, the lamp came without a shade so another black and gilt shade was purchased along with another suitable cloisonné finial.



We bought the fourth lamp we have in this shape from a dealer in Scotland who mailed it to my sister in Crawley, West Sussex. Unfortunately, the box they packed it in was not big enough for the lamp and it was damaged in shipping. Fortunately, it was insured and the post office settled in full for the damage. However, we really think that it was the shipper's fault and not the post office's. The lamp is in

the **TEMPLE (2928)** pattern on the yellow and black colourway. It now sits in my sister's attic awaiting our next trip to the U.K. to get it restored and to bring it back to Canada.

One other thing about this particular purchase is that the lamp came with its original shade. Luckily, this was not damaged in shipping and, although it is missing a few of the black glass beads that hang around the rim, it is in pretty good, usable condition. Here is a picture of the lamp and shade as sent to us by the seller before it was shipped and damaged. Another example of this lamp shape can be seen on the cover of *The Carlton Times* volume 16. The shade is a different shape from the one on our **TEMPLE** lamp, indicating that they came in a variety of styles.



One of the other areas of Carlton Ware that we collect is **ENGINE TURNED**. This series mainly comes in a variety of shapes and sizes of vases but cruet sets, lidded boxes and bowls can be found, as well as lamps. We have 3 of the lamps in our collection and they seem to be a variation on one of the vase shapes. We have a 7½" lamp on the matt cream ground (**3982**); a 7" lamp on the gloss pink ground (**3977**) and a 5½" lamp in the matt green ground (**3979**). The cream and pink lamps were both purchased over eBay.



The 5½" green lamp can be seen above, second from the right. You can see the hole for the electrical cord in the centre near the base of the lamp. We have not yet fitted this one out for use and so enjoy it sitting on the shelf with other pieces of **ENGINE TURNED** in the same colourway. We have to thank **Don & Jane** in Minneapolis, who kindly gave us this lamp base as a gift.





In April 2003, we bid on a **Secretary Bird** lamp that was for sale on eBay and was coming from the east coast of the U.S.A. For some reason, there was only one other bidder on the lamp and they only bid an opening bid. We could see nothing wrong with the lamp from the pictures provided and when it arrived it was found to be in near mint condition.

The lamp is in the orange & green colourway (**4017**) and the bongo drum shaped body measures 11" high and is similar to the ovoid vase shape **443**. The lamp sits on a custom brass base made of acanthus leaves, supported by short legs ending in lions paw feet.

Like most of the lamps that have come into our collection, this one had no shade. Having no idea what the original shade might have looked like, finding an appropriate shade was difficult. Once again, we settled on a black shade with a gilt interior that would throw all the light down onto the fabulous lamp base. For this particular lamp we also bought a lapis lazuli finial as it perfectly matched some of the enamels in the bird.

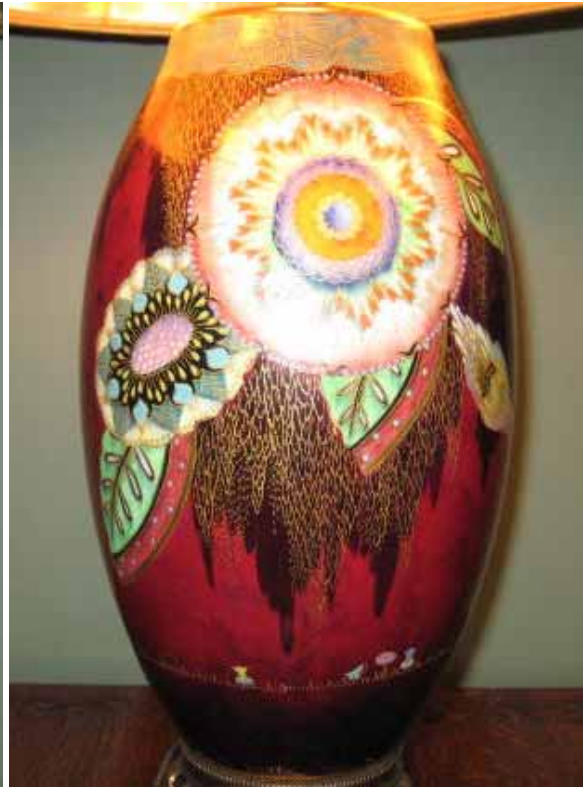
The pictures here in no way show the true beauty of the lamp. The enamel work is outstanding, both in the main pattern on the front and the secondary pattern on the reverse. The design work by **Violet Elmer** is outstanding and the intricate enamel work performed by the painters is second to none. The lamp must have taken many, many hours to produce.

However, the story does not finish here. After the lamp arrived and we contacted the seller to confirm safe delivery, they told us that they had a second lamp that they would be putting up on eBay in a week or two. We asked them if we could buy it directly as it would be nice to have a pair. They said we could but not for the same price. The lamps were not a pair as the second lamp was in the RUBY LUSTRE (**4018**) colourway and they considered this to be the superior of the two. Who were we to argue? The price they quoted (50% higher than the original lamp) was still fair as far as we were concerned, so we agreed.



When it arrived, we thought it was equally as stunning as the first lamp; however, we feel that the first one that they sold was the superior of the two colourways. What do you think?





We have written before about the most recent addition to our lamp collection, one that we found on our last trip to the U.K. in April and May 2006. Nevertheless, we want to include all our lamps in this article, so here it is again: On Friday, May 12, we made our last Carlton Ware outing for this holiday and drove down to Arundel, an historic town on the south coast of Sussex. It was a lovely day and turned into an even better one when we found the buy of the trip in the first market we visited; a **Moonlight Cameo** lamp in a dark green colourway with a lustre blue cameo. We had not seen the pattern on this colourway before and were happy to see that the pattern number **2969** was marked on the base. We could hardly get this lamp out of the shop quick enough, lest the vendor came back and changed his mind on selling it.



Once again, the lamp came without a shade; so on our return to Canada, we went to our usual lampshade outlet to search for a suitable shade. What we found was a white cloth shade in the same shape as the black shades we have for the candle lamps. We are sure that you will agree that the shape of the shade is a perfect fit with the shape of the base.





One of the last two lamps in our collection of 14 lamps has also been featured in a previous Newsletter. In August 2005 we drove up to Edmonton for the annual Fringe Festival, the biggest such festival outside of the original in Edinburgh. As well as enjoying the sights and sounds of the Fringe, we also visited the three large antique markets that are located quite close to the street festival site.

In the last of these, we found this lovely **GUINNESS** lamp. Unfortunately it has a bit of damage – someone must have thought the pint was for real as it has been broken off and poorly glued back on. Nevertheless, it was a great price and, even without the correct shade, we were happy to add our first **GUINNESS** piece to our collection.

Finally, we have a **ROCK GARDEN** lamp in a wonderful geometric art deco shape. It is in the buff colourway and the lamp can be found in most, if not all, of the several colourways in which this series was produced. Once again, not the original shade – it would be interesting to see what this might have looked like. However, it wasn't too difficult to find something suitable.

You probably wonder where we display all our lamps. Most of them are in use around the house but some of them are packed away in a storage room. That is because we do not only have Carlton Ware lamps. We really have a fetish for lamps of all types and have lamps by Poole, Beswick, Charlotte Rhead, and other factories as well as an interesting collection of 1950s lamps with original parchment and fiberglass shades. We have posted pictures of some of these at the end of this Newsletter.

We hope you have enjoyed looking at all of our Carlton Ware lamps. If you have any lamps in your collection, we would love to have pictures of them, especially if they have their original shades, and we will include them in a future Newsletter.

Finally, if you were wondering where we get all our finials, we have a great privately run electrical shop here in Calgary that does all of our rewiring for us. They have a good selection of shades that mostly come from the U.S.A. and they have a lovely selection of finials that they get from all over the world.

After all that, we now go onto a couple of emails that we have recently received:







In April, we heard from **Harry**: *"I found your names on the Carlton Ware site and I'm hoping you can help me find out the name of this pattern. I was given a gorgeous condiment or cruet set made by Carlton Ware and I've looked at many books and in web pages but I haven't been able to find the name. I've included some pictures and I hope you can find the time to advise me."*

We wrote back saying: "Many thanks for your email and the pictures of your lovely cruet set – it is indeed gorgeous as you say! It is an earlier piece from the factory, dating to around the 1920 period. It is one of the patterns that would have been

produced in a smaller quantity than most of the more familiar and popular patterns of the time. Unfortunately, if these patterns had factory given names, most of the records have been lost so we cannot help you in that regard just yet, however, we will make further enquiries on your behalf. Also, we would like to include your pictures in our next Carlton Ware Newsletter with a request to our readers to comment as to whether any of them have similarly patterned pieces on this or other shapes and in any other colourways. It is always interesting when new discoveries are found."



So, here we are asking anyone out there in **Carlton Ware World** if indeed there are other pieces in this pattern (**2387**) similar to this or in other shapes and colourways.

The metalwork on this set is quite ingenious. The finials on the pot lids sit inside the handle of the stand. The pots are opened when the handle is pushed back and down. The set looks to be in near mint condition and the silverplate also looks to be in good shape.

We would be most interested to hear from readers regarding this pattern and will pass on the information to **Harry**.

In May, we received the following email and picture from **Mary**: *"I have been researching Carlton Ware as our family has a pair of ginger jars that belonged to our great-grandparents back since the late 1920s. I have determined that they are pattern 3143, **PARADISE BIRD & TREE WITH CLOUD**. I know you wrote about finding some pieces in Toronto back in 2003. Would you know whether pieces ever come available in this pattern?"*

We replied: "Thanks for sending us the picture of the lovely piece of Carlton Ware in your family. This pattern was designed by **Enoch Boulton** in 1927 and the shape is known as a Temple Jar and nearly always comes with the Foo Dog finial. This is a much sort after shape and comes in several different sizes. From your picture, it looks like your piece is the medium size (14" to 20" high). The largest pieces known can measure over 24" high from the base to the top of the finial. The pots we found in Toronto have been sold but pieces certainly do come up in this pattern and we will keep an eye out for you and make enquiries with our readers. If you have a picture of the pair together, we would love to have a copy for our Newsletter."



**Mary** wrote back: *"I was so pleased to read about our Temple Jars; they measure about 14" high from base to finial. I have enclosed a photo of the two together. As these jars are going back to my sister, (I've been lucky to have them in my home for a year and now fear I'll have some spots to fill), I would be interested if you hear of any pieces in the red that come up for sale. I would be open to any shapes but would like to stay with the same pattern. My first wish would be to duplicate the ones in the photo, as they are being returned to my sister as she's the one who inherited them. My aunt has the candlesticks and a bowl."*

What a stunning pair and how wonderful that they have remained in the same family since they were made! If anyone knows of any pieces for sale in this pattern in the **Ruby Lustre** colourway, please let us know and we will pass on the information to **Mary**.

Finally, some important news from **Carlton Ware World** and its new website.






As many of you will know by now, Carlton Ware World Wide, with the introduction of its new website, has been renamed **Carlton Ware World** (CWW).

The new website replaces the club's magazine *The Carlton Comet*, so that information on Carlton Ware reaches a wider audience. To this end, the new site had more than 36,000 hits during its first month!

The new site is updated frequently, and you will find it packed full of useful and accurate information. Membership to Carlton Ware World is FREE and you can subscribe to an occasional email keeping you up to date with the world of Carlton Ware. From the site, just click on the link at the bottom of the **Home** page. Below, we show a picture of this page.

About Carlton Ware World
Steering Committee
Brief History of Carlton Ware

- Home
- Latest News
- Past News
- Meetings
- Types of Ware
- Backstamps
- Fakes
- 2008 AGM
- eBay Searches
- eBay Watch
- Ian & Jerome's Newsletters
- Links
- Contact
- Video
- Registered Designs
- Jess Bradshaw, Obituary



A Script backstamp

## Welcome to Carlton Ware World.

Site last updated **Friday 11 July 2008** - see Latest News page.

Also now available, **Ian & Jerome's Newsletters** from Canada - see menu on the left.

From this website you can easily access everything useful related to Carlton Ware on the Internet - and more! We even include efficient searching links for eBay.

So, use this site as a springboard to all things Carlton Ware on the Web. Just click on the topics to the left to see what we have to offer.

This is the new website for the friendly group of collectors and enthusiasts - **Carlton Ware World**, formed in 2004 as Carlton Ware World Wide.

We hold regular meetings, so come and join us.







**Carlton Ware World** is run by the most knowledgeable people on this extraordinary pottery.

This is your gateway for all things Carlton Ware.

We invite you to explore, and hope that you will enjoy doing so.

**Membership is FREE.**  
If you would like to join us and receive an occasional email to keep you up to date with the world of Carlton Ware send us an email by [clicking here](#).

The site is best viewed with a monitor resolution of 1024 x 768 pixels or greater.  
Your screen resolution is currently set to 1280 x 1024.

Images by Harvey Pettit © Copyright 2008. All rights reserved.

CWW gives you access to well researched accurate information on many aspects of the pottery. The **Latest News** page is one to visit on a regular basis. The next most used part of the site is the **eBay Searches** page, which provides one click access to efficient eBay searching for our favourite pottery. Using this facility, you will not miss that elusive pot!

Another page gives details on club meetings, the next being at Upton Upon Severn on Saturday 26 July. The site also provides the programme for the groups Get-together and AGM on 4 & 5 October. We are proud to announce that this year the celebrity guest speaker is the highly entertaining **Eric Knowles**, who is well-known contributor to *The Antiques Road Show*.

The strength of the site is that it is supported by many leading experts including Harvey Pettit and Helen Martin, who have the widest of all knowledge, built up over more than twenty years. Of particular

importance, is the group's access to the extensive Cochrane & Pettit Archive of Carlton Ware. This unmatched source began to document the history of the pottery in 1980, beginning with frequent visits to the works, which was then still in production. Many interviews with those who designed and made the pottery at Copeland Street help map an accurate history that such a distinguished pottery deserves.

Lots more is available on the new site, including easy access to this and previous newsletters, so do visit it and join up by going to

[www.carltonwareworld.com](http://www.carltonwareworld.com)

### First with the Best

---

Terry Wise Membership Secretary of Carlton Ware World sent us the following about the Cochrane & Pettit Archive of Carlton Ware that many of you may not have heard of.



Carlton Ware World chairman Harvey Pettit and the late Peter Cochrane were the first people to recognise that the history of Carlton Ware and the development of its now widely admired products were unrecorded. That was nearly 30 years ago when in 1980 they became the only people to have researched the Copeland Street factory while it was still working. Several visits were made to the pottery with the full co-operation of the then managing director Arthur Wood. Harvey and Peter were given full access to the manufacturing areas, design studios, pattern books, publicity brochures and importantly, both past and present employees, relationships that continue to the present day. Harvey Pettit is recognised as the leading authority on Carlton Ware.

This ongoing pioneering work led to the creation of *The Cochrane & Pettit Archive of Carlton Ware*, which encompasses the world's largest and most accurate Carlton Ware archive and collection. This resource has been the inspiration and origin of much of the current knowledge in the public domain through initially another principle researcher, Helen Martin via *The Carlton Times* and subsequent welcomed publications.

Our members have made important supplements to this archive by their creation of specialist reference collections. These include Carlton China ([www.carltonchina.info](http://www.carltonchina.info)), Chinoiserie, Art Deco, Blush, Embossed and Crested Ware and single pattern groups.

Terry Wise

Membership Secretary

Carlton Ware World

Well, that's it for another Newsletter. We hope you have enjoyed this one as much as we have enjoyed putting it together. Hopefully we will get back to a more regular format and get out another issue to you soon. In the mean time, here are the pictures of some of our 1950's lamps. These go great with our 1950-60s era Carlton Ware, such as the **LINEN** and **ORBIT** patterns, as well as some of our Poole and Beswick pieces.

Ian Harwood & Jerome Wilson  
[jeromian@shaw.ca](mailto:jeromian@shaw.ca)  
403-243-8172

