

CARLTON WARE NEWSLETTER #36

From

Ian Harwood & Jerome Wilson

NOVEMBER 2006

Some wonderful Carlton Ware art deco "Best Ware" patterns were seen on eBay during November, including **Bell**, **Floral Comets** and **RIVER FISH**. There was also a badly damaged piece of **Rainbow Fan** in the green colourway that garnered several bids even considering its condition. However, perhaps the most spectacular piece to appear was a vase in the elusive **FAIRY** pattern. The 6" **442** shaped vase was in pattern number **3564** and the vivid lustre blue was stunning. The piece attracted 13 bids and sold to an Australian buyer for £2,210.



FAIRY 6" vase shape **442**, pattern **3564**, lustre blue

The **FAIRY** pattern is another of the beautiful art deco patterns designed by **Violet Elmer**. The gossamer winged fairy is hovering in mid air holding a ball. She is facing a curved band of brightly coloured flowers, typically in the style of this designer. An interesting feature of this pattern is the fact that behind the fairy is her larger shadow; this is similar to the effect of the devil on the **RED DEVIL** pattern.

This pattern seems to have only been produced in two colourways, the Lustre Blue pattern number **3564** and a Lustre Orange pattern number **3576**. A beautiful example of this colourway was most recently seen at the Woolley & Wallis sale a year ago when the outstanding pedestal bowl pictured below sold for £2,000.



FAIRY 12" pedestal bowl, pattern 3576, lustre orange



FAIRY 7" ginger jar shape 311, pattern 3564, lustre blue
FAIRY 7" vase shape 406, pattern 3576, lustre orange



We had several responses to our question on the **FRUIT BASKET** eggcup cruet set that we pictured in last month's Newsletter. **Vicki in the U.K.** wrote: *"I have the **FRUIT BASKET** eggcup holder set (in the yellow colourway) but it doesn't have a handle. I saw the one with the handle on eBay and checked whether the base of my set looked like it might have had a handle but I saw no obvious marks."*

Denise in the U.K. wrote: *"Just thought I would mention that the handle on the **FRUIT BASKET** eggcup cruet usually comes with the **CROCUS** cruet that you have in the following photo! Have seen probably about a dozen of these over the years and they have always been with the **CROCUS** cruet but, as soon as I say this, you will get reams of letters proving me wrong!!"*



Well, we didn't get reams of letters but we did also hear from **Harvey Pettit, Chairman of CW3**, who wrote: *"The wicker-like handle to the **FRUIT BASKET** eggcups is probably original. If I recall correctly, the example in the C&P Archive has one too. Usually they are missing. Clearly the set is much easier to move about the kitchen with a handle. A ceramic one would have been far too vulnerable to breakage."*

Diana Kearns in London wrote: *"Congratulations as always on another fascinating newsletter! I was particularly interested to see the photo of the **FRUIT BASKET** eggcup cruet with green wicker handle. I believe that this handle is part of the original design. Hanging on a hook in my kitchen is a small Carlton Ware bowl in the **Medley** pattern (3593) - which also has a two-tone wicker handle! The bowl has integral orange china knobs on either side for the wicker handle and there can be no other purpose for these knobs."*



"The Carlton Ware factory did design pieces and farm them out to other concerns for embellishment, for instance, tiny lustre, silver-footed bowls in the 1920s. These were obviously sent to a firm of jewellers who designed, hallmarked and attached the pedestal foot to the bowl."

*"I love the colourful **Medley** pattern, don't you? It is stunning and looks superb on art deco shapes. Dating from the early 1930s, this pattern was designed by **Violet Elmer**. The only downside of **Medley** is that it tends to flake off. On close inspection, it appears that the painters applied the pattern's distinctive bands of colour by hand, whilst the piece was rotating on a pottery wheel. This created minor ridges on the surface of each piece, making the pattern rather fragile, unfortunately. It is rather scary to wash these pieces.*

*"Whilst I had out the photographic tent and tripod, I thought I'd also take a picture of my small collection of **Medley** pieces - showing variations of this striking, vivid and artfully designed pattern."*



Medley pattern (clockwise from top left)
Chamberstick pattern **3587**
Pot with wicker handle, pattern **3593**
3½" vase, shape **442**, pattern **3587**
Jug pattern **3599**

RED DEER ANTIQUE FAIR

On November 18, we decided to go to an antique fair in Red Deer, Alberta. This is a city about 150 kilometers north of Calgary, about half way to Edmonton. It is not a fair we go to every year, as quite often the hi-way is not great if there has been a recent snowstorm. However, Saturday was a lovely sunny day and the roads were clear. We got to Red Deer early afternoon and the fair was still very busy with people. It was much larger than



the last time we were there, which was several years ago now. We spent the whole afternoon going round the show and were surprised by what we found. The first thing we found were some plates we liked by Grafton. They included 4 plates and 2 saucers that were really deco, pyramids and palm trees, in cobalt blue, orange and buff, on an interesting square shape. When we picked them up, the dealer said he had some more pieces on another table. There he had 2 trios, a milk & sugar and a cake plate. We liked the cake plate (although it wasn't the same shape as the smaller plates) but didn't care for the rest of it (the shapes were not deco and didn't suit



the pattern). So we asked the dealer if he would split up the trios and put the 2 plates with the 4 others we wanted and sell us all 6 with the cake plate. He was quite happy to do that so we bought the set and left him the 2 odd saucers. Next we found a pair of 7½" Carlton Ware plates in the **DRAGON** pattern that were in excellent condition. They had the Crown & Swallow backstamp and included the pattern number **2818**.



Then we found some Carlton China plates, 2 sets of 8, in the **SPRINGTIME** pattern. This is the first time that we have ever found any Carlton China in Canada. They were individually priced so we went through them all and discarded 3 because of damage and bought the rest. All in all we were very satisfied with our day at the fair and glad we made the effort to go.



WOOLLEY & WALLIS AUCTION

November 30, 2006

Michael Jeffery sent us the following notice: *"I thought you might be interested to see the small section of Carlton Ware coming up in the British Art Pottery auction on 30th November - it includes a lovely **CHINALAND** bowl. Click on the line below, click on view sale and scroll to Lot 951 onwards. I have condition reports and additional images ready if you would like more information."*

www.woolleyandwallis.co.uk



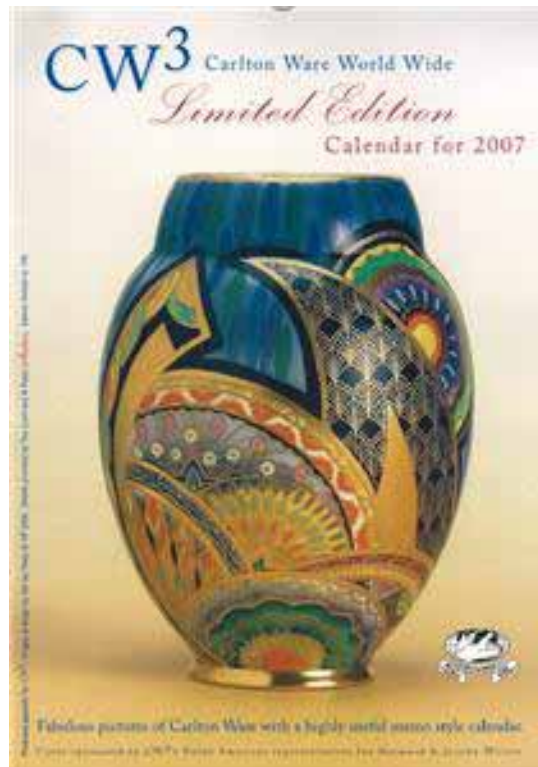
Lot 951: **TEMPLE**, 12½" floating bowl, pattern **2929**, gloss blue & matt black
Lot 952: **Fantasia** chamberstick, pattern **3421**, gloss powder blue



Lot 953: **CHINALAND** 10" bowl, pattern **2948**, orange lustre

LAST MINUTE CHRISTMAS SHOPPING!

Just a reminder that if you have not already ordered your **Limited Edition 2007 Carlton Ware Calendar**, then you should do so right away. Copies are going fast! The calendar is in A3 size (approx 11¾" x 16½") and is printed on high quality paper in a limited edition of only 150 copies. Each page has been sponsored by a member and has a picture of some different items of Carlton Ware. Each picture is complemented by a month per view calendar containing public holidays for the UK, Australia, Canada, South Africa, New Zealand, and the USA, reflecting the truly international spread of the club. The calendars are supplied rolled and in a tube and will make an excellent and unique stocking stuffer for the Carlton Ware fanatic in your life, who may of course be you! The price is £12.95, which includes postage worldwide. Don't miss out, click here to get your copy now! or go to the CW3 web site at www.carltonwareworldwide.com where you can find full details.



Ian Harwood & Jerome Wilson

We can be contacted at:

Phone: (403) 243-8172

eMail: jeromian@shaw.ca